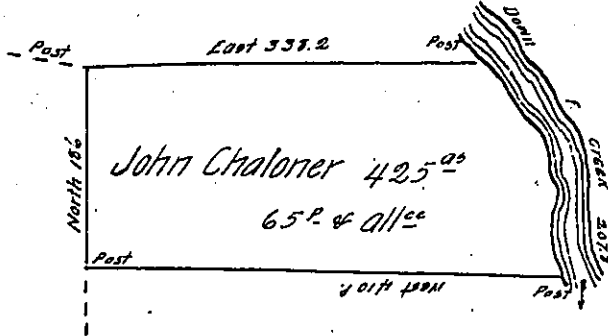


Gro Fox

River Courses beg^d
9.36° E. 57.2
9.46° E. 32
9.7° E. 96
5.10° E. 22.6
2.078 P.

John Fries



Hugh Logie

Situate on and adjoining the West side of French Creek in Allegheny County containing 42.5 Acres and 65^e and allowance of Six p. Cent for Roads &c. Surveyed the 6th day of October 1794 In pursuance of a Warrant Bearing date the 13th day of April 1792.

Wm Power D.Y. 95

To Danl. Brodhead Esqr }
Surveyor General }

IN TESTIMONY that the above is a copy of the original remaining on file in the Department of Internal Affairs of Pennsylvania, made conformably to an Act of Assembly approved the 16th day of February, 1833, I have hereunto set my Hand and caused the Seal of said Department to be affixed at Harrisburg, this Eighteenth day of April 1904

James N. Brown
Secretary of Internal Affairs.